

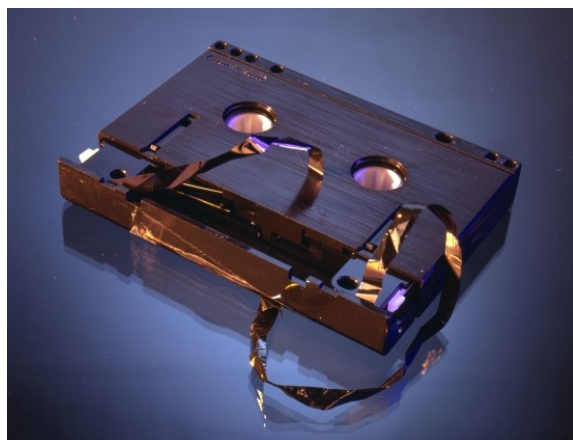
# El guardian del tesoro

Rafael Martinez Guerrero

PgconfEU-2014, Madrid



# Garantias

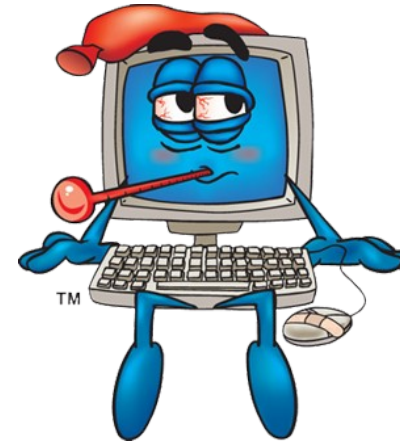
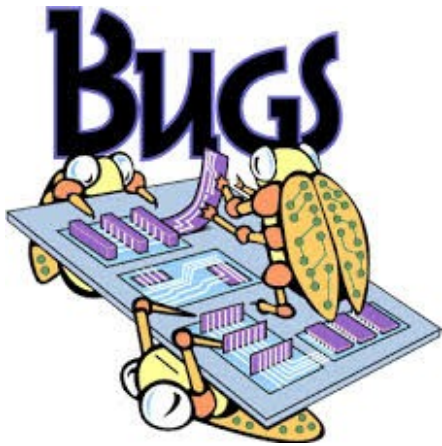




# Desastres

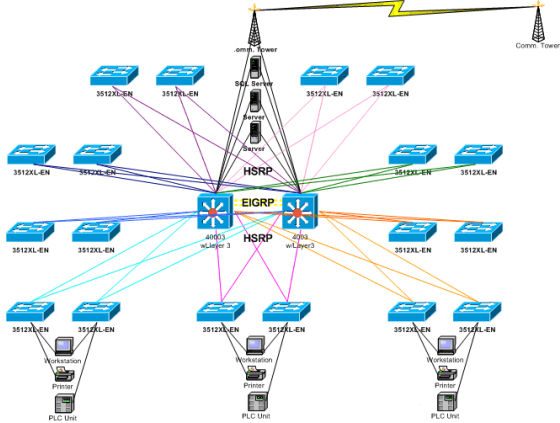
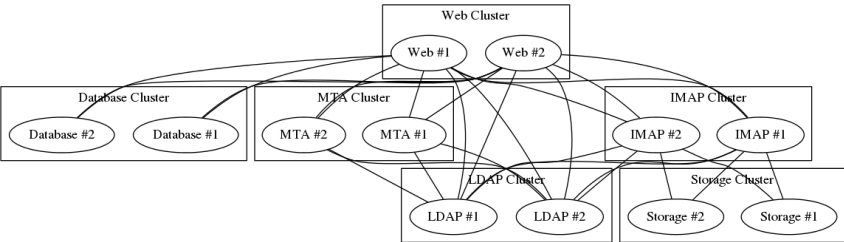
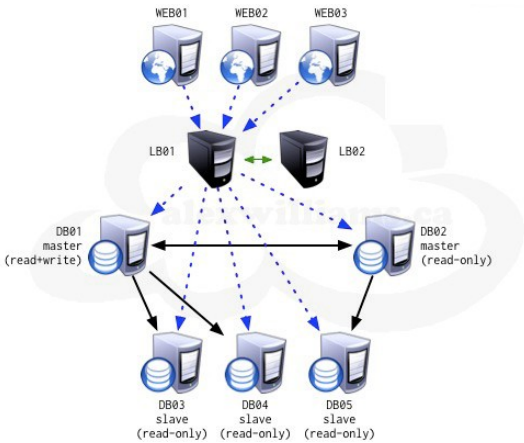
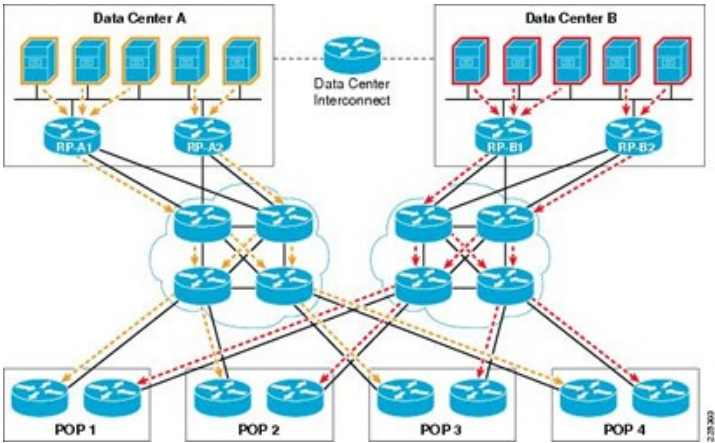


# Día a día





# Solución?



# ¿Qué queremos arreglar?



# RPO / RTO



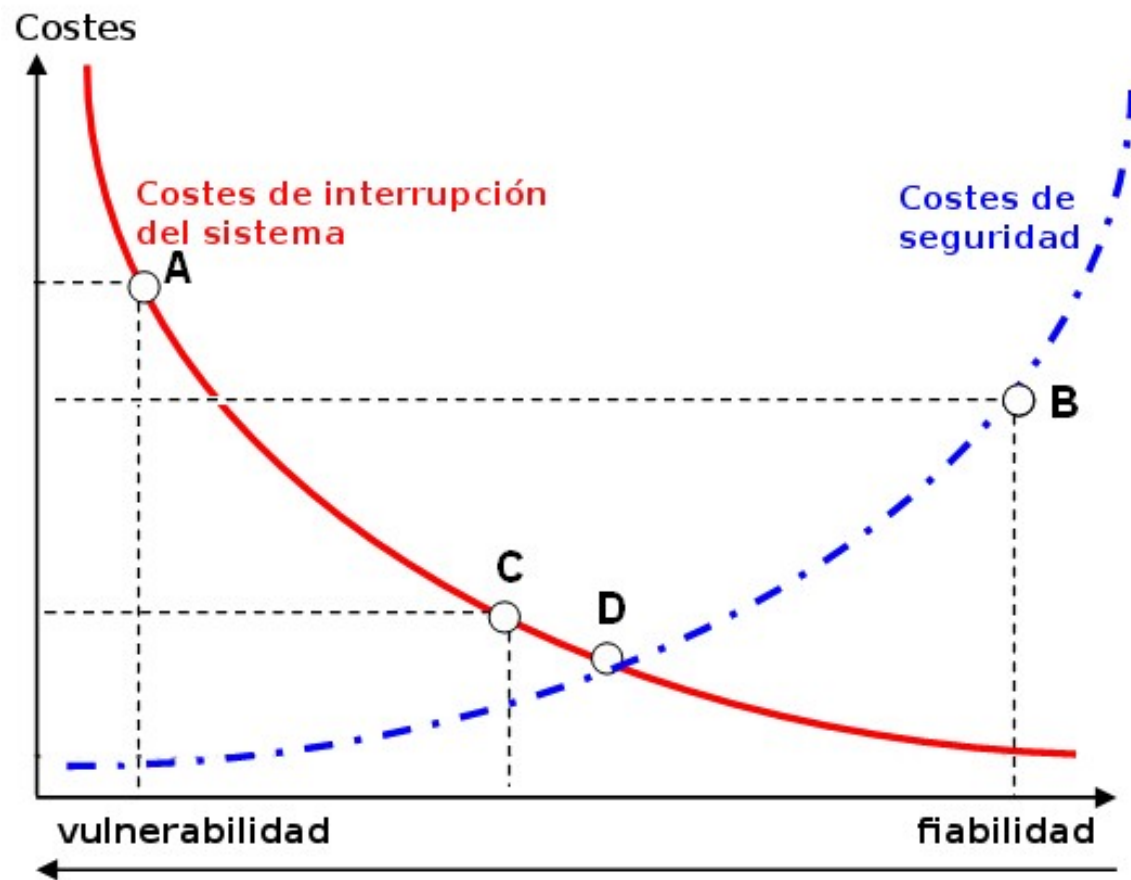
- RPO: Recovery Point Objective
- RTO: Recovery Time Objective



# RPO / RTO



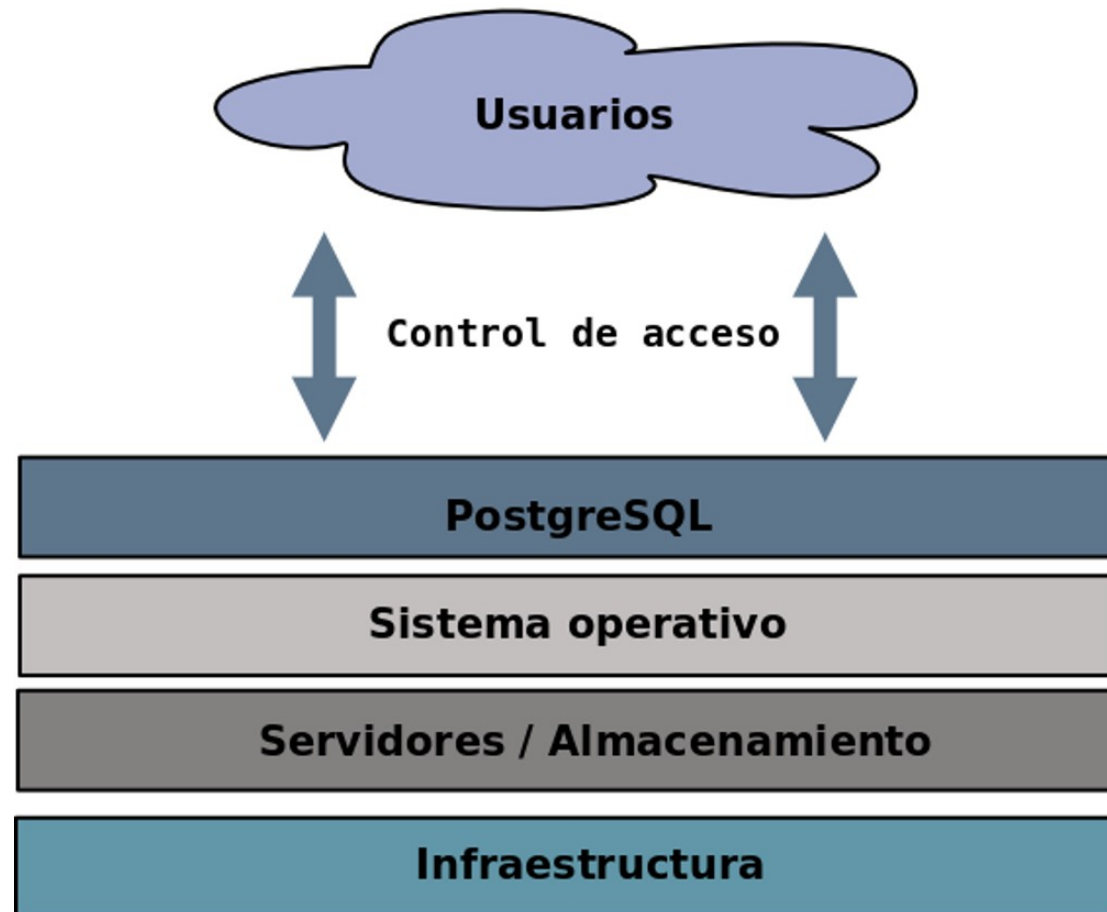
# Costes



# SPOF – Single point of failure



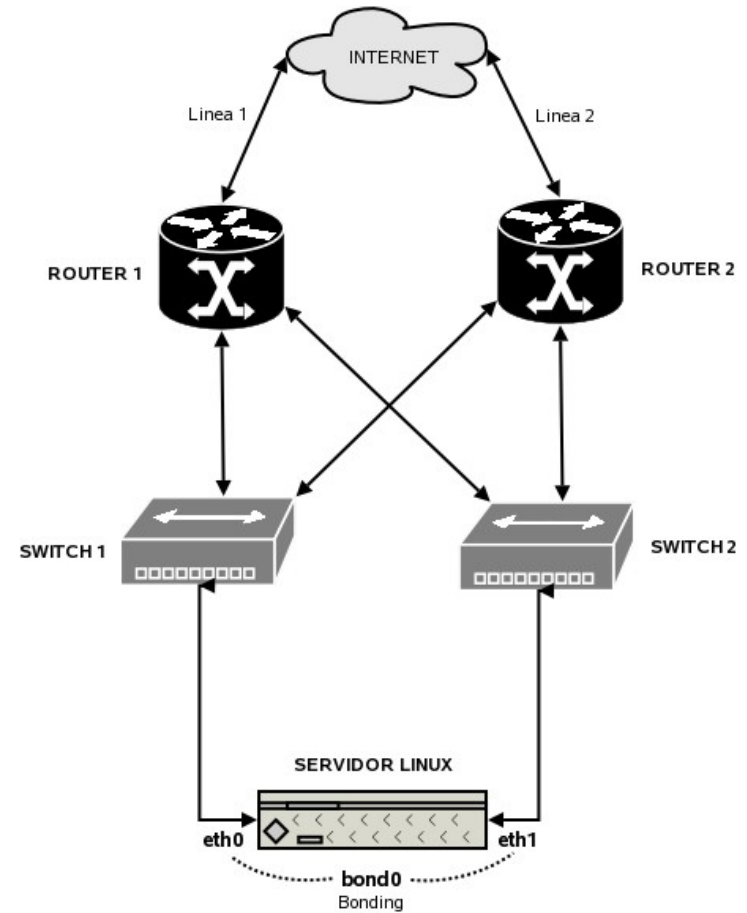
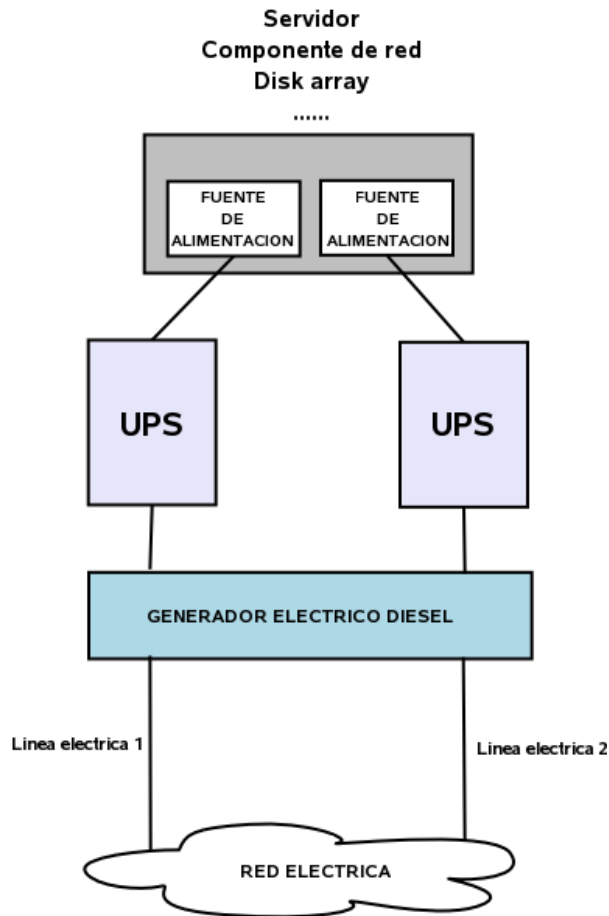




# Hosting / Cloud

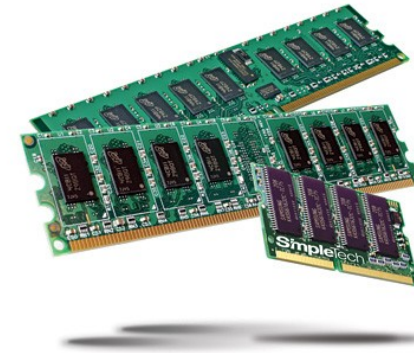


# Infraestructura

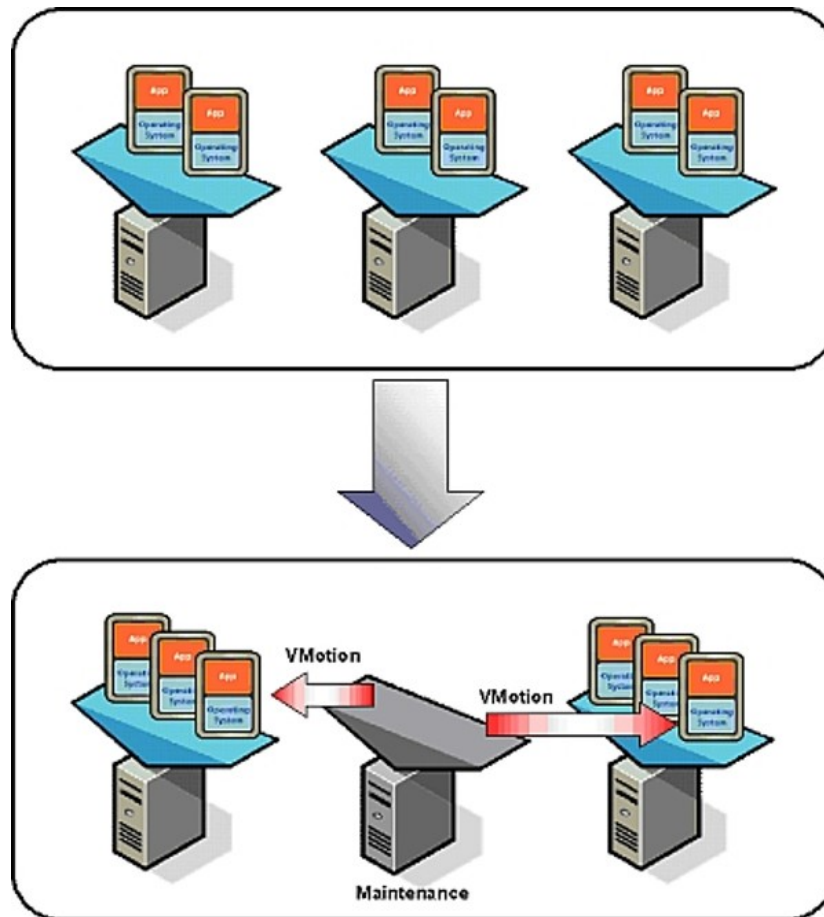




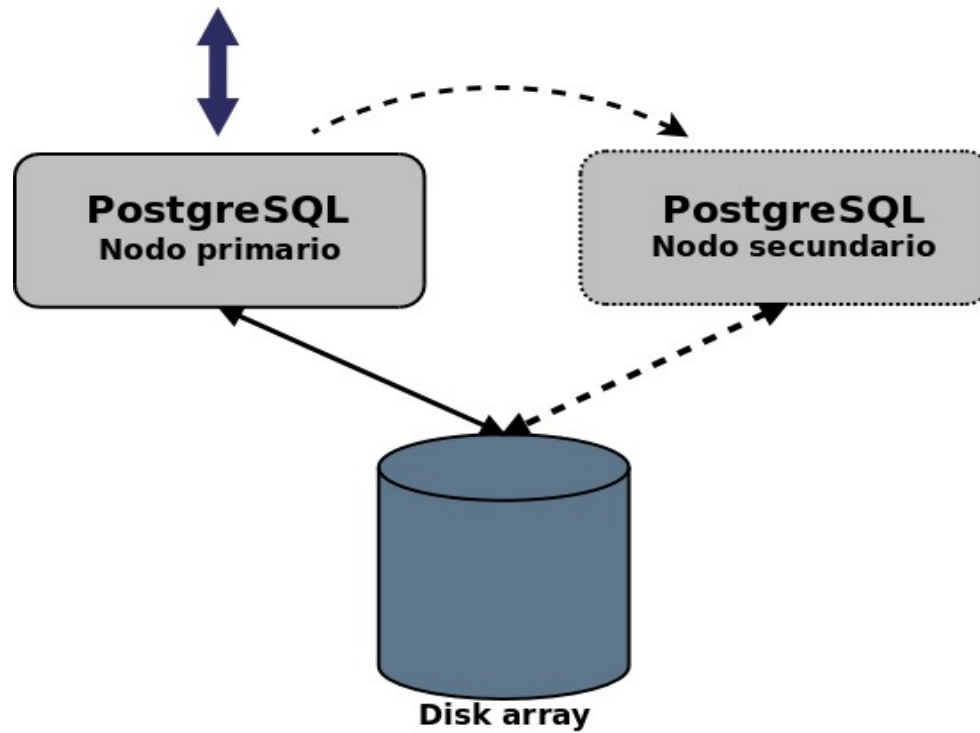
# Componentes



# Virtualización - HA



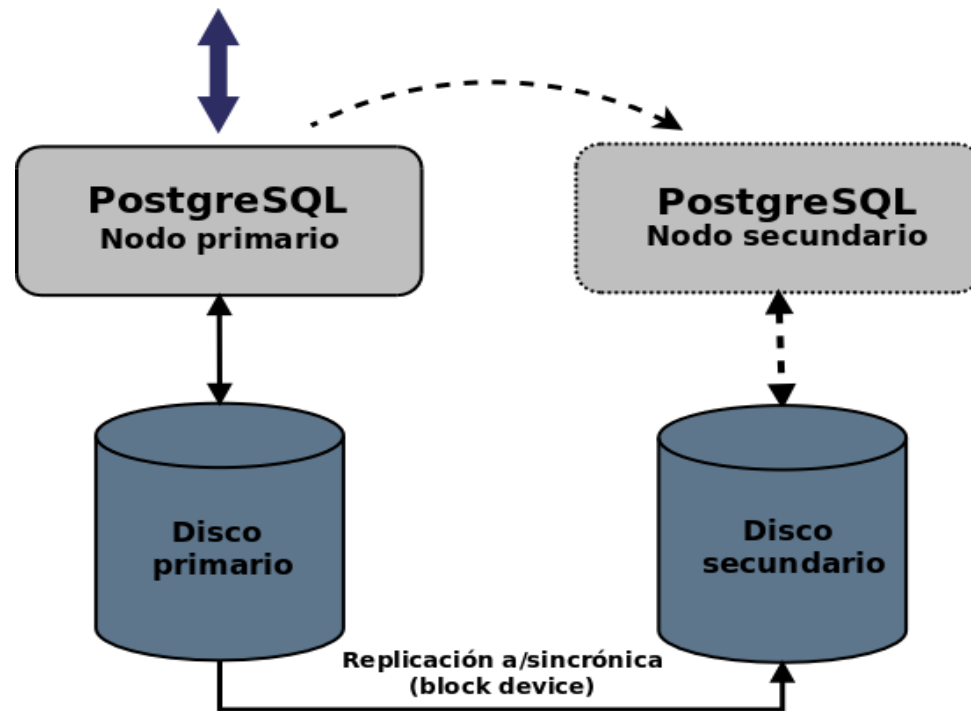
# Almacenamiento compartido



- HP ServiceGuard
- Redhat Cluster Suite

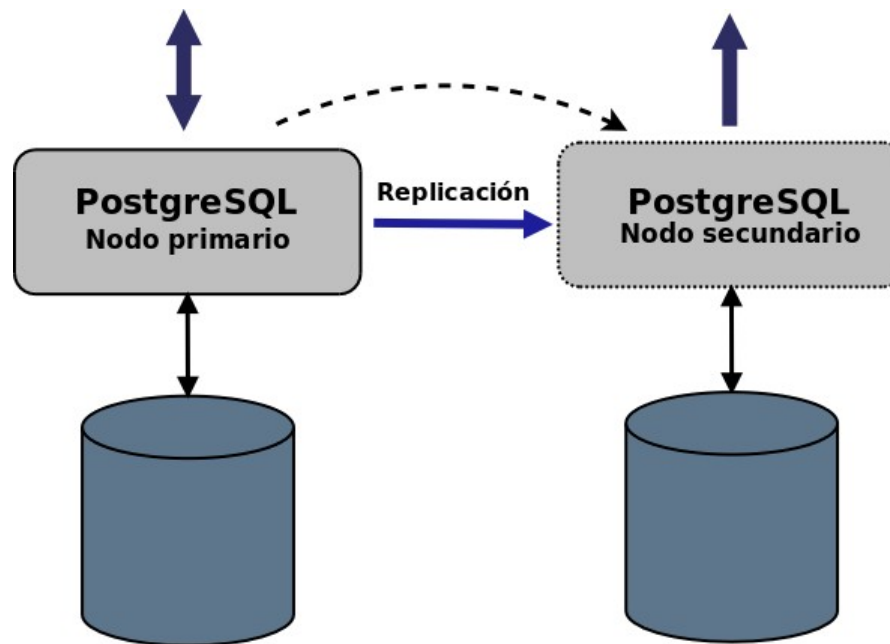


# Replicación – block device



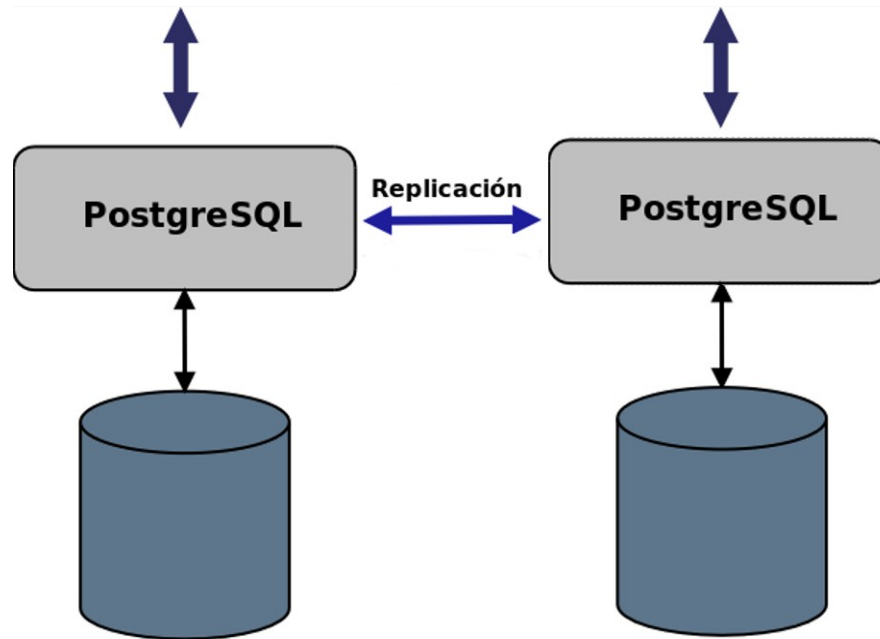
- DRDB

# Replicación maestro-esclavo



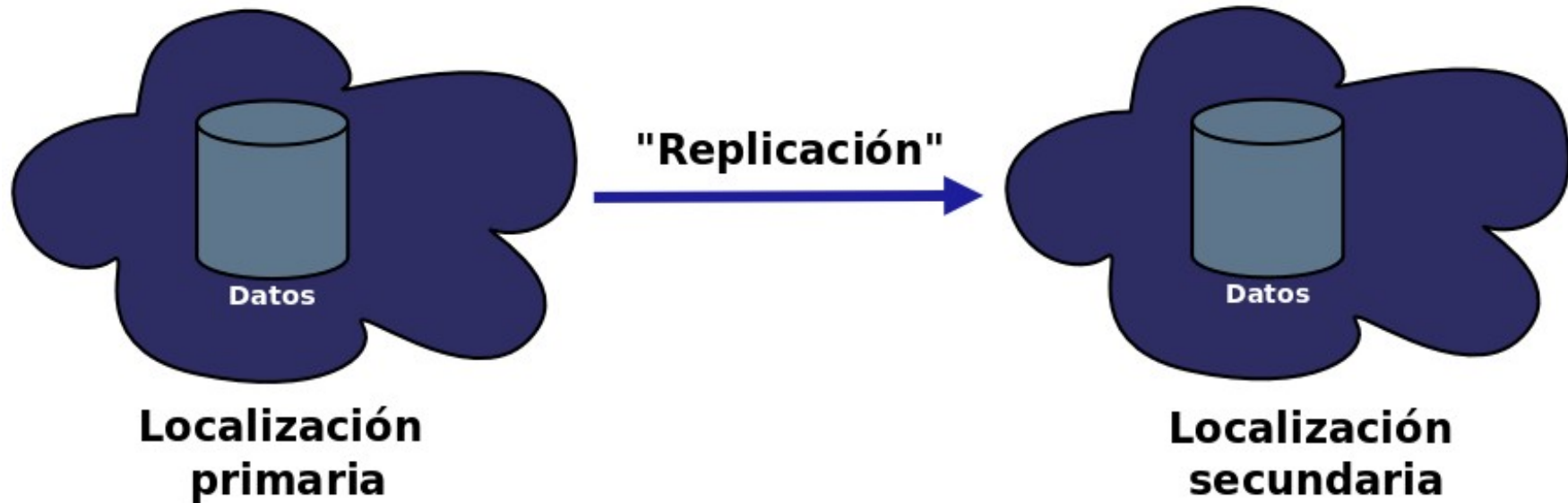
- PostgreSQL HotStandby
- Slony, Longdiste

# Replicación maestro-maestro

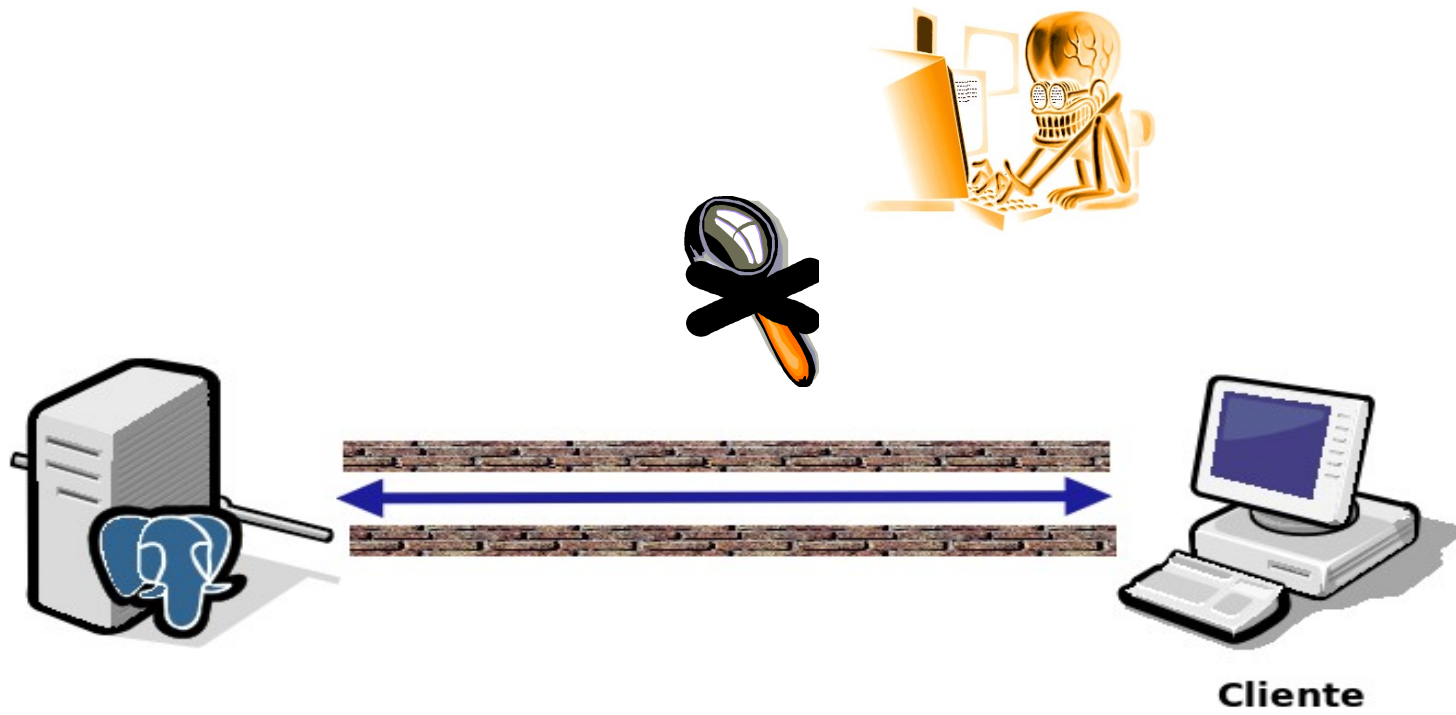


- BDR – replicación bi-direccional
- Bucardo

# Múltiples localizaciones



# SSL

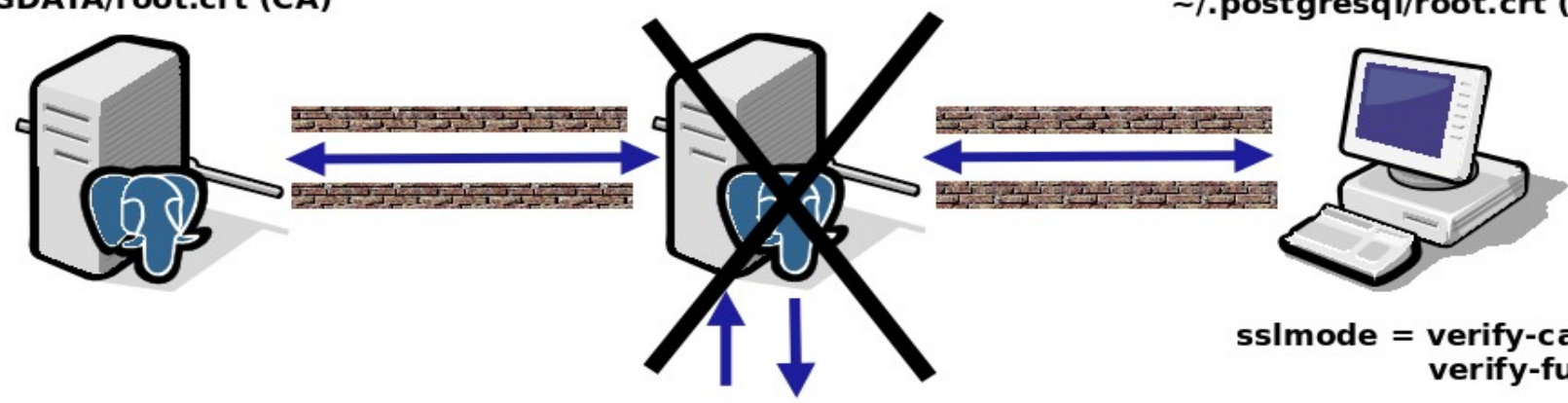




# “man-in-the-middle”

`$PGDATA/server.crt`  
`$PGDATA/server.key`  
`$PGDATA/root.crt (CA)`

`~/.postgresql/postgresql.crt`  
`~/.postgresql/postgresql.key`  
`~/.postgresql/root.crt (CA)`



`sslmode = verify-ca / verify-full`

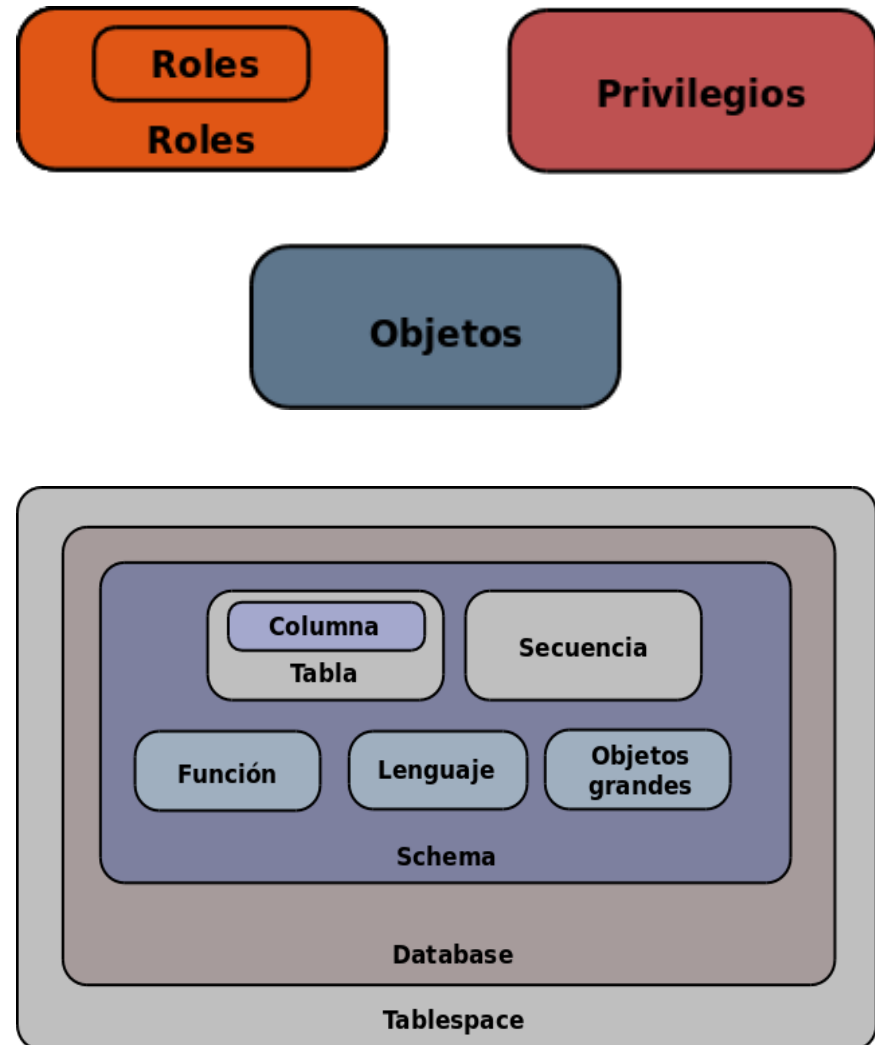


# Autenticación

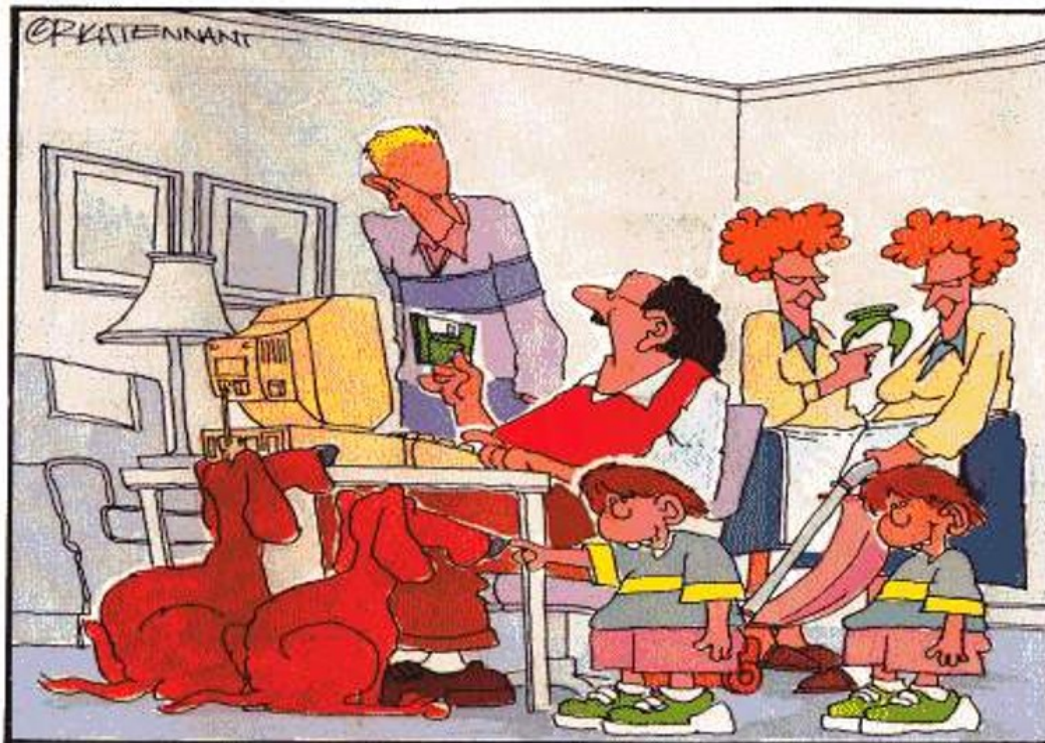


# Privilegios

r -- SELECT ("read")  
w -- UPDATE ("write")  
a -- INSERT ("append")  
d -- DELETE  
D -- TRUNCATE  
x -- REFERENCES  
t -- TRIGGER  
X -- EXECUTE  
U -- USAGE  
C -- CREATE  
c -- CONNECT  
T -- TEMPORARY



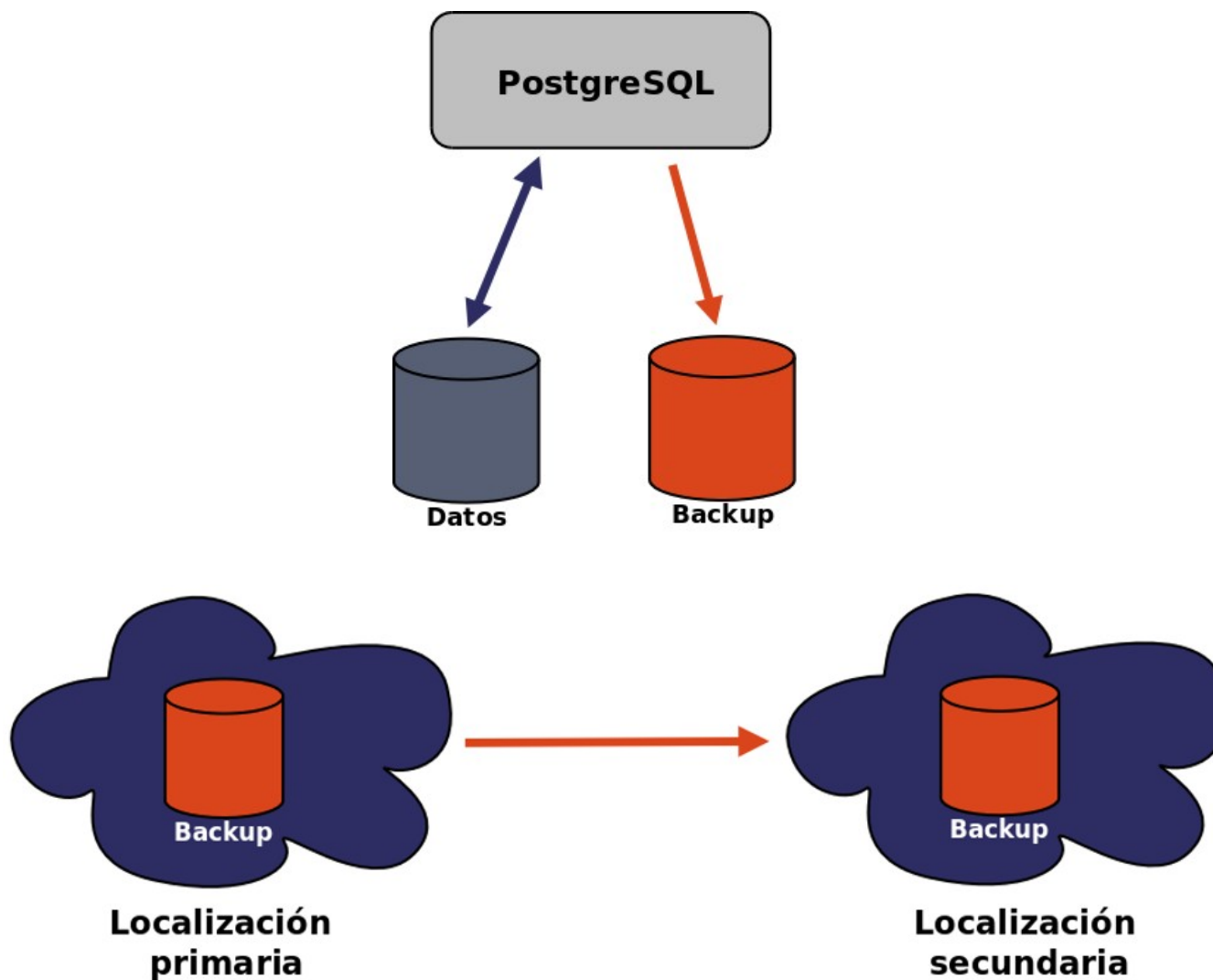
# Copias de seguridad



" I ALWAYS BACK UP EVERYTHING."



# Copias de seguridad externas





# Control de acceso a los backups



**Backup**

# Automatización



**CF**Engine

# Monitorización / Tendencias



Zabbix, Icinga, ...

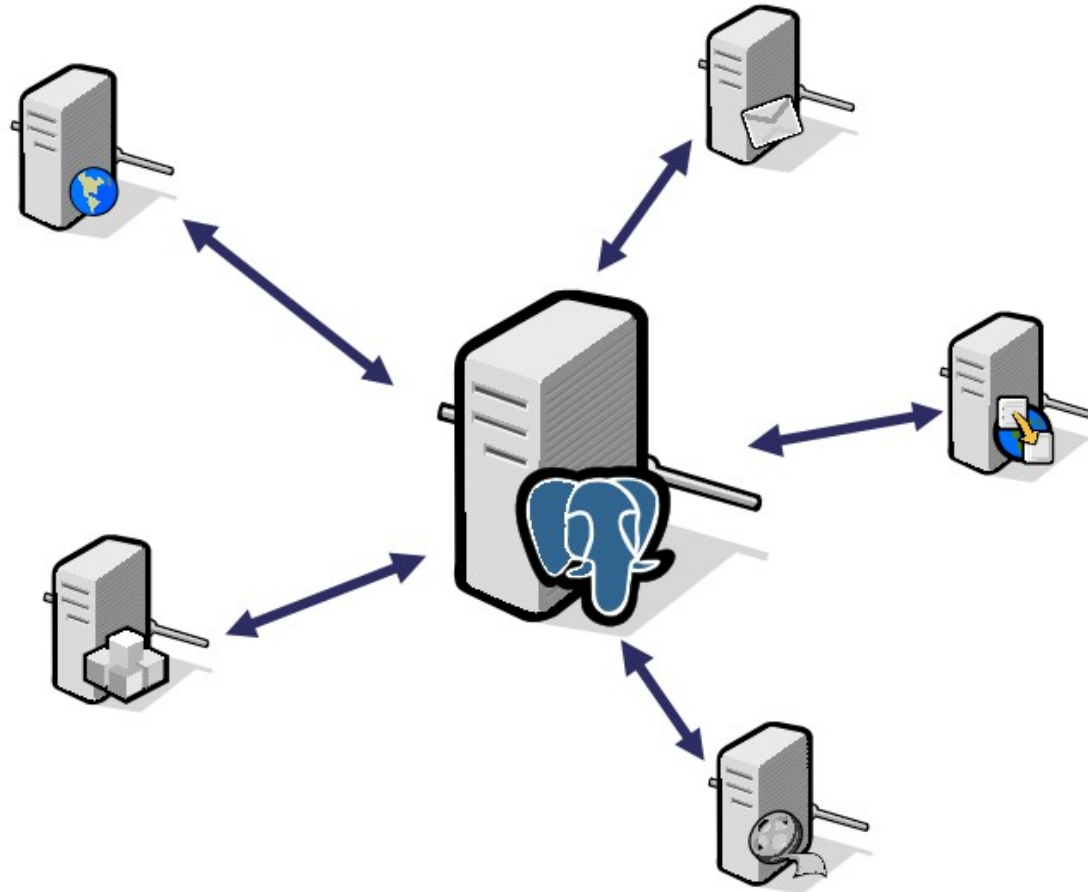
Graphite, Munin, pg\_stat\_activity, Pgbadger, OPM ...

Logstash, Elasticsearch, Kibana

# Documentación / Procedimientos

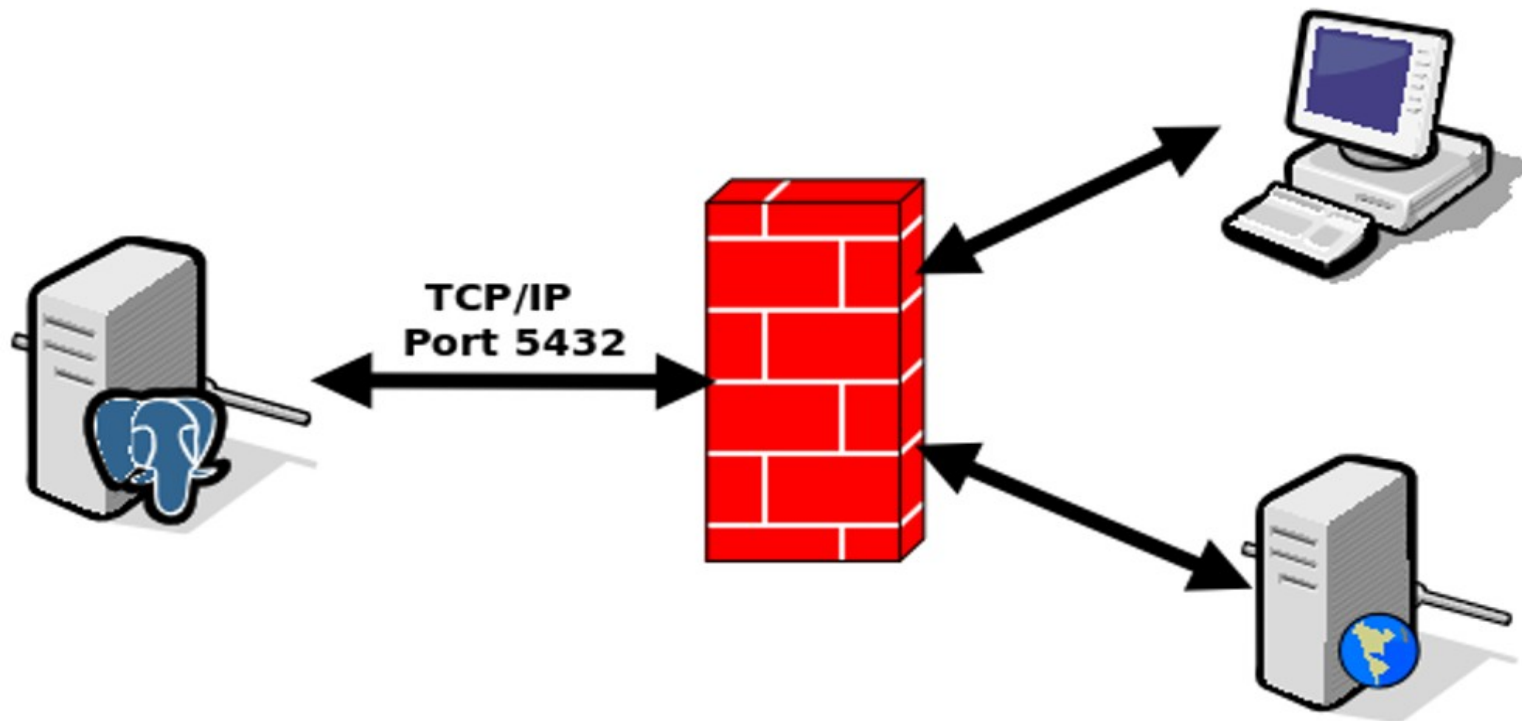


# Servidores dedicados





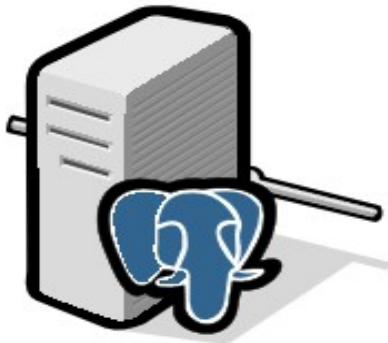
# Cortafuegos





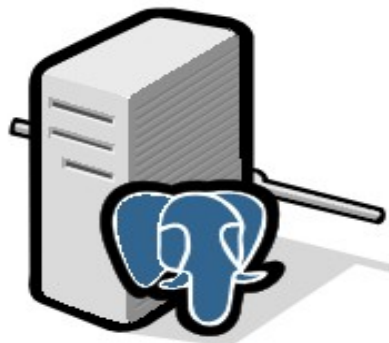
# Producción != Test

**Desarrollo**



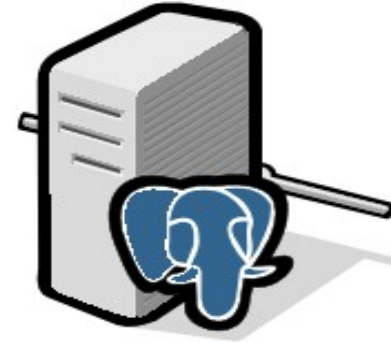
**!=**

**Test**



**!=**

**Producción**



# Plan de emergencias









Presentación distribuida bajo Licencia Creative  
Commons Atribución-NoComercial-  
CompartirIgual-3.0

© Copyright 2014 Rafael Martinez Guerrero  
PostgreSQL-es / Universidad de Oslo

